



this issue

Presidents Report **P.3**

Industry News **P.6**

Gold Tracker offer **P.15**

WA's Wild dog problem **P.22**

Reviews on the 6000 **P.24**

eNews of the



**Representing Prospectors
Since 1904**

REMEMBER

All Branches are having their AGM meetings over the next few months. Step up and support your local branch even if it is as Committee Member.



Read about it on page 20

APLA ASSOCIATION CONTACT DETAILS:

State Delegates- admin

President. James Allison pres@apla.com.au
Secretary. Steve Palmer sec@apla.com.au
Treasurer. Marise Palmer treas@apla.com.au

Branch Officers of APLA

Perth Branch

President. Greg Young perpres@apla.com.au
Secretary. Sue. McKenna persec@apla.com.au
Treasurer. Brad Mitchell pertres@apla.com.au
Delegates James Allison, Marise Palmer, Steve Palmer

Albany Branch

President. Gerry.Gregson albanypres@apla.com.au
Secretary. Michael McCaffery albanysec@apla.com.au
Treasurer. Bruce Smith albanytres@apla.com.au
Delegates Noleen Smith, Gerry Gregson

Goldfields Branch

President. Tim Bates goldfieldspres@apla.com.au
Secretary. Robert Laing goldfieldssec@apla.com.au
Treasurer. Annie Laing goldfieldstreas@apla.com.au
Delegates Julie Bradley, Ziggy Wolski, Lindsay Stockdale

Mandurah Branch

President. Alan.Branchi manpres@apla.com.au
Secretary. Bob.Wilson mansec@apla.com.au
Treasurer Amanda Holmes mantres@apla.com.au
Delegates John Krokosz

Southwest Branch

President. Tom Cousins swpres@apla.com.au
Secretary. Judith.Smith swsec@apla.com.au
Treasurer. Jo Barber swtres@apla.com.au
Delegates Judith Smith, David Birch

APLA Consultant contact

James Allison
0400 308 126
pres@apla.com.au

APLA is made up of individual members in 5 Branches throughout the State of WA.

It can only run as effectively as its input from those members.

Volunteers are needed to fill positions in the upcoming Branch AGMS



**APLA
NEEDS
YOU**

From the President's Desk, April 2022

In February 2022 APLA delegates had a meeting with the Shadow Minister for Regional Development, Hon. Shane Love MLA, and discussed the Aboriginal Cultural Heritage act and the upcoming rules and regulations which affect prospectors, lease holders and small mine operators in WA. The minister was unaware who APLA was and how many people were in our association so the delegates took the opportunity to enlighten the minister.

APLA delegates explained to the minister the economic impact prospectors and the prospecting industry have on regional businesses and that a recent Minelab/ BDO survey highlighted, in detail, just how much financial support prospectors provide to regional Western Australia.

APLA delegates provided the minister with a copy of the Minelab/BDO survey and requested the minister speak with his colleagues and inform them what impact the new ACH act could have on regional Western Australia.

APLA requested a meeting with the Shadow Minister for Aboriginal Affairs, Hon Vince Catania MLA, and this was confirmed for mid-March. However, on the day of the proposed meeting Mr Catania was delayed in parliament and the meeting was abandoned. APLA was then informed Mr Catania had contracted COVID-19 so all meetings were cancelled until further notice. APLA has contacted Mr Catania's secretary to arrange another face-to-face meeting in May 2022. A response has not been received to date.

APLA was advised that Native Title Services Goldfields (NTSG) are refusing to accept the Regional Standard Heritage Agreement (RSHA) when an application for a mining tenement is lodged. Instead, they are sending out their own Heritage Protection Agreement (HPA) asking prospectors to sign their agreement. APLA is advising its members not to sign the NTSG HPA on the basis as it amounts to a money grabbing exercise and nothing to do with heritage protection. APLA explained there were large gap between large scale mining companies with their financial clout and APLA members. DMIRS stated their staff were attending DLPH meetings on NT, and agreed that some sort of scale was needed for small scale operations. DMIRS had no real answer as to how a scale could work until new regulations are formulated. The NTSG HPA was passed to DMIRS Native Title team and explained as; "...if a prospector is not happy with the NTSG agreement, he/she was to sign Regional Standard Heritage Agreement (RSHA) which is available on the DMIRS website, sign a Statutory Declaration to prove he/she has signed the RSHA agreement and, if no solution is forthcoming from NT parties, DMIRS will refer it to the NT Tribunal where issue can be resolved"

As regards these agreements being legal after new regulations have been implemented by DLPH, DMIRS considered that some would fall under the grandfather clause and others would be contested.

For clarification, APLA provides the following definition of a grandfather clause;

A grandfather clause is an exemption that allows persons or entities to continue with activities or operations that were approved before the implementation of new rules, regulations, or laws. Such allowances can be permanent, temporary, or instituted with limits.

In March APLA representatives had an informal meeting with AMEC representatives to discuss the ACH rules and regulations and their impact on the small mining and exploration companies. It was agreed to share information so that both parties fully understand and can cooperate on issues related to the ACH act.

The co-design process for the ACH rules and regulations has commenced with an introduction by the Minister for Aboriginal Affairs, Dr Tony Buti, during which he stated he would like to see the process completed by 2023. APLA has 2 delegates attending all co-design meetings, which is open to other APLA members to attend, usually online, due to COVID protocols.

In early April APLA delegates in Kalgoorlie met with Eastern Goldfields Prospectors Association (EGPA) members to discuss the ACH Act and, in particular, the proposed rules and regulations whereby APLA delegates made it very clear that prospectors shouldn't have to pay any aboriginal group to carry out a survey to identify their own heritage place or sacred site.

Keep in mind that APLA branches are staffed by volunteers to cover executive positions, delegates and committee members and I am aware some branches don't have a full complement of executive members which, by default, increasing the workload burden onto those holding existing positions. APLA is seen within numerous government departments as the only recognized organization that represents both prospectors and the prospecting industry and we need to keep an active presence at all times. As branches are now focusing on their respective AGM's look at your own life experiences and ask "can I contribute to the ongoing success of APLA to ensure I/we have access to the bush so we can go prospecting when we want to, camp where we want to and enjoy to bush" If your answer to the above is YES then I ask you to step forward and help keep APLA to only recognized prospecting organization in Western Australia

James Allison

APLA President

EDITORIAL

Steve Palmer. Editor

Contact: **0498353232**
aplanews@apla.com.au



All the APLA Branches are holding their AGMs over the next 2 months.

All branches need volunteers to step forward to assist in running the Association. Commitment is small but the returns are great. Meeting more people, access to information, better understanding of prospecting in WA.

Get your nomination forms from your local branch. Contact the Secretary of your branch.

The APLA State AGM is definitely being held in Mt Magnet on the Saturday, 17th Sept 2022.

The site of the meeting will be the Winding Shed at the local museum on Saturday.

At this stage the caravan park is getting very full for Friday, Saturday night, so if you want to book do so now.

There will be an overflow area in Mt Magnet set aside for APLA Members and portable toilets set up but no showers or water, so it is self-sufficient and contained.

Further info will be sent to all members next month and hopefully we will have ground to prospect on after the event.

MEMBERS SEEKING LEGAL ADVICE

As you are aware APLA has appointed a Consultant so members with questions / queries on any aspect of the Mining Act in WA can be answered.

Such enquiries as Marking out, POW's, changing from a Prospecting Lease to a Mining Lease, any questions regarding owning or accessing a Lease in WA.

From the Editors Desk

The advice given is from a professional prospector who owns and operates a gold lease.

APLA consultant.

James Allison

0400 308 126.

The Consultants advice is only on practical mining matters and does not stray into the legal side of mining, such as the Wardens Court, criminal matters, legal matters. That advice should and must come from a professional legal team.

APLA has contacted a legal firm with a number of employees who are ex DMIRS staff. In fact most have been DMIRS Mining Registrars in their own right.

The legal firm involved is

AUSTWIDE Mining Title Management P/L

Contact Ph:9309 0400
reception@austwidemining.com.au

Remember this is for legal advice only. Any queries regarding prospecting in WA contact the APLA consultant.

Annual APLA Branch camps

If any APLA member have leases that they would be willing to allow a group camp on to and gain expenses for DMIRS Form5, please contact me on 0498 353 232.

All camps are self-contained, disruption to the environment is kept to the minimum, and usually last for 10 days.

CURRENT INDUSTRY / DMIRS NEWS

Abandoned Mines Program

Mines and Petroleum Minister Bill Johnston today announced local Aboriginal company Gee Gie has been contracted to work on the first stage of a new project under the Abandoned Mines Program.

Gee Gie will work with the Department of Mines, Industry Regulation and Safety to identify, document and prioritise remediation work of abandoned mine features close to Cue, Marble Bar and Yalgoo.

Gee Gie will consult with the local Shires and Aboriginal communities on the nature of the project, and work to build positive relationships within the local communities.

The project is funded through the Mining Rehabilitation Fund, a pooled fund to which Western Australian mining operators contribute.

Comments attributed to Mines and Petroleum Minister Bill Johnston:

"Western Australia has a long mining history and as a result there are abandoned mine features across the State.

"Gee Gie and the Department of Mines, Industry Regulation and Safety will work together to prioritise the appropriate management of abandoned mine features near Cue, Marble Bar and Yalgoo.

"They will assess the risks and identify any remediation works to benefit the local communities.

"With Gee Gie's project capabilities and track record of working and consulting with Aboriginal and local communities, I'm confident the project will be managed respectfully."

Comments attributed to Aboriginal Affairs Minister Tony Buti:

"Gee Gie is an experienced Aboriginal business committed to creating jobs for Aboriginal people as part of the first stage of this project.

"Recently released figures show the McGowan Government continues to grow the proportion of its contracts awarded to Aboriginal businesses.

"Since the introduction of the Aboriginal Procurement Policy in 2018, the State Government has awarded 697 contracts to 209 Aboriginal businesses, with a combined value of more than \$476 million."

EYE ON IT

DMIRS have on the bottom of their website page a box entitled.

Subscribe to updates.

The department provides a range of newsletters and information products to keep you up to date. Subscriptions to the latest DMIRS news services of your choice are available.

They are free to the public and cover a wide range of articles and information.

Click and keep yourself informed on the DMIRS web page.

Australia's new gold rush? The post-pandemic gold industry

Gold has been a key export for Australia since the late 1800s, with the country [thought](#) to hold 17% of the world's total estimated gold reserves – equivalent to 9,500 tonnes. For the past decade, it has been the second largest gold producer in the world, following hot on the heels of China, and its resilience to the pandemic has allowed it to maintain steady production. It was even able to briefly claim the top spot as other nations recovered from operational delays and site closures.

With Australia's exploration investment at an all-time high and a number of new projects set to come online, the nation is poised to meet the new demand for gold.

Gold in Australia

The last two years have been the best on record for Australia's gold producers, [with around 321 tonnes](#) of the precious metal produced in the 2021 fiscal year. This upwards trend is only expected to continue, with predictions for production volume to reach 379 tonnes by 2023, and [analysts saying](#) that the country's gold sector is going to grow at a compound average growth rate of 3.5% between 2021 and 2025.

Some effects from the pandemic were, of course, inevitable.

"The pandemic had a very limited impact on mining in Australia overall, as there was a relatively swift reaction from the government and key states – particularly Western Australia (which has the largest share of gold reserves at over 70%), where there have been very tight restrictions on access," says GlobalData's director of mining research & analysis, David Kurtz.

Production in the region is also supported by the fact that the government's exploration budget is the [highest it's been since 2012](#). Expenditure on [gold exploration is of particular interest](#), amounting to a 10-year high of A\$359m in March 2021, while analyst firm S&P Global Platts reported that Australia's drill holes are currently the highest on record, also with a particular favour for gold.

The 'safe haven' of gold

A primary driver of the uptake in demand for gold is the post pandemic revival of the jewellery market, which saw a [six-year low](#) in the second quarter of 2020.

"Gold demand is primarily being driven by the jewellery sector at the moment, following the ongoing economic recovery as the impact of COVID-19 lessens," says Kurtz. "China and India are the main consumers and the revival of their economies is driving up jewellery demand."

"The biggest factor underpinning retail demand for gold is rising incomes," says World Gold Council regional CEO Andrew Naylor. "About 70% of demand for gold comes from emerging markets. And that's primarily Asia: China is the largest, followed by India, Southeast Asia, and the Middle East."

Over the years, gold demand has shifted to Eastern nations as they see economic expansion, with gold sometimes seen as a more reliable form of currency than cash.

However it's not only retail that is driving gold, and Naylor points to the fact that the metal is what is considered a "safe haven asset", receiving increased investor attention in times of instability.

As gold is a physical asset that is relatively unimpacted by other asset classes, it makes investor portfolios more resilient to unexpected shocks. While the pandemic was one such shock, inflation seen across the UK, US, and parts of Europe – as well as unfolding Ukraine-Russia tensions – are similarly causing investors to turn to gold as a reliable investment.

“Gold has been a safe haven asset for some time now and with elevated trade and geopolitical risk we expect that to continue, especially with events such as the Ukraine conflict,” says Rundus.

Australia is well placed to meet this need as it was reported to have the world’s largest gold reserves in 2021, while a series of new projects set to open in the coming years show demand is in no danger of outstripping supply.

A golden opportunity

Currently, there are 100 gold projects under development in Australia, of which 11 are currently undergoing construction, with anticipated operation commencement dates between 2022–2025. Once all up and running, the sites are expected to add a combined gold production capacity of more than 1,166koz to the nation.

Key upcoming projects include the Red 5-owned King of the Hills operation in Western Australia, which is currently under construction and has an annual gold production capacity of 203koz. Newcrest Mining - the country’s largest gold producer- has also just completed its Cadia plant expansion, which has 344koz of metal production capacity and is expected to be operational by 2023.

“The Australian gold market was the world’s largest gold producer in the half year ending 30 June 2021,” says Rundus. “It has the world’s largest reserves and is forecast to grow at a rate of 8% over the coming years, propelled by both production from new mines and existing mine expansions.”

The one caveat to Australia’s blossoming gold industry is that, as is common with all commodities, deposits are becoming more difficult and expensive to mine, with miners having to go deeper and further to access high grade ore.

“In Australia, gold ore is generally becoming more difficult and expensive to mine as ore quality diminishes,” says Rundus. “A major portion of production costs for gold ore mining remain fixed and are significant, so the world price of gold and the value of the Australian dollar largely determine the industry’s performance and profitability.”

Despite this warning, gold is set to remain a profitable industry for the foreseeable future, due to expand in Australia and beyond as nations get back on their feet. While the period of uncertainty is by no means over, it seems that gold will remain a consistent choice for investors looking for stability. With Australia still boasting the largest reserves, the nation is well placed to answer investor’s needs and remain a hub for gold.

Yakka Munga Station land clearing *three-year probe ends in warning for Chinese company.*

The West Australian state government has issued a Chinese-owned company accused of illegally clearing bush in the Kimberley with a "letter of warning" after a nearly three-year investigation.

Zenith Australia Investment Holdings [cleared about 120 hectares of bush without a permit on the Yakka Munga Station](#) east of Derby during a fortnight in June 2019.

The bulldozing prompted a stop-work order from the WA government after [Nyikina Mangala traditional owners blockaded the station gates](#) to stop the machinery from returning to the property.

Traditional owners said they lost significant sites during the bulldozing, including ancient trees and termite mounds that housed the bones of their ancestors.

The department said Zenith had since complied with all remedial requests to rehabilitate the area, which needed to be taken into consideration in determining a penalty.

The statement also said Zenith maintained it had only acted unlawfully due to its the department's own advice, and the department said it had since given them further advice around the requirements of the Environmental Protection Act and updated its own publications for clarity.

"Zenith has provided an assurance that it intends to fully comply with the Act, however any further unauthorised clearing within the property may result in higher enforcement options to ensure compliance," the statement said.

The conclusion of the investigation comes just months after the traditional owners expressed their frustration over the length of the process.

Kimberley environmental activist Martin Pritchard said the outcome of the investigation was "deeply disappointing".

He said the bulldozing saw the clearing of the Kimberley's unique tropical savanna, boabs, eucalyptus and other shrubs.

"There's not enough emphasis on protecting vegetation in the Kimberley," Mr Pritchard said.

"This is a stark example of the government attitude towards protecting the land here."

Meanwhile, pastoralists have criticised the "heavy-handed approach" from the [WA government with its stop-work order](#), citing the need to better manage relationships with international pastoralists.

Pastoralists and Graziers Association WA president Tony Seabrook said the letter of warning was a positive outcome.

"I think there's a bit of overexuberance there and the way that the project was carried forward ... it's cost them a lot of money," he said.

"They've copped a fair sort of a burden here, and I think they've got the attention of everybody.

"I don't think you'll see anything happening out there like this again because people don't want to get financially hurt as much as Zenith have been hurt."

**** EDITORS COMMENT***** Three years ??

Aboriginal Cultural Heritage Act 2021 co-design process

Before the Aboriginal Cultural Heritage Act 2021 comes into operation, the Government needs to develop the regulations, statutory guidelines and operational policies to support the new Act and ensure it will have its intended effects.

The *Aboriginal Cultural Heritage Act 2021* (ACH Act) provides a modern framework for the recognition, protection, conservation and preservation of Aboriginal cultural heritage while recognising the fundamental importance of Aboriginal cultural heritage to Aboriginal people.

It represents a significant step towards achieving equity in the relationship between Aboriginal people, industry and Government by replacing outdated Aboriginal cultural heritage laws and removing the controversial Section 18 approval process in favour of agreement making with Aboriginal people.

Co-design Process

A transitional period until early 2023 will allow for the regulations, statutory guidelines and operational policies to be developed. A [Reference Group](#) has been appointed to oversee a co-design process with Aboriginal people and other stakeholders.

The co-design process was launched at an event on Tuesday, 29 March 2022.

The first phase of co-design will commence with workshops in key regional centres in April and May and an online consultation process. Workshops will be held in Broome, Bunbury, Karratha, Kalgoorlie, Kununurra, Esperance, Albany, Geraldton, Carnarvon and Port Hedland. Two workshops will also be held in the Perth metropolitan area.

As stakeholders, APLA has representatives who will be attending these meetings.

As these processes come into place over the next years it is imperative that APLA members do due diligence on where Aboriginal Heritage sites are located if they wish to prospect for gold.

<https://www.wa.gov.au/service/aboriginal-affairs/aboriginal-cultural-heritage/search-aboriginal-sites-or-heritage-places-ahis>

NOX SERIES

Unearth more buried treasure.



Gordon Heritage
Metal Detectorist

Whether you're detecting on land or in water, our NOX metal detector coils make it easy to cover more ground, go deeper and get into even the tightest spots. So you can discover more hidden treasures.

Fully Minelab approved and available in three sizes, they simply plug-and-play into your 600 or 800 Minelab Equinox detector.

- Fully submersible – waterproof to 3m /10-feet
- Available in 3 sizes: 10x5", 14x9" and 15"
- Fit EQUINOX 600 and 800
- 2 year warranty – register at coiltek.com.au



10x5" NOX coil

When you need to manoeuvre tight spots and detect in high trash areas, this little coil offers superior sensitivity and pinpointing ability.



14x9" NOX coil

With an elliptical shape and great depth, pinpointing and sensitivity capability, this robust coil is ideal for detecting in water and open fields.



15" NOX coil

The largest and deepest searching coil for Equinox detectors, this one's built for the serious treasure hunter. It covers more ground and detects targets other coils can't.

Want to learn and understand more about Geology.

Possibly pinpoint new gold deposits.

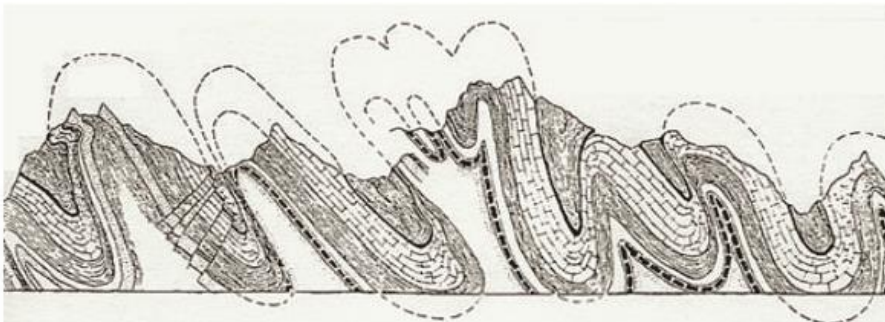
Buy Dr. B. Fagan's

UNDERSTANDING GEOLOGY ... Geology for Non-Geologists.

UNDERSTANDING GEOLOGY
Geology for Non-Geologists

Dr Robert Fagan

For PC & Mac



*A fully narrated, full colour, illustrated,
40 chapter, digital textbook in
PowerPoint Presentation format*

Web page: understanding-geology.com

This digital text or course is designed for first year geology students, prospectors, mining personnel, teachers, engineers, bureaucrats, financial analysts, journalists, corporate executives, managers and other professionals needing a full & comprehensive overview of geology, what geologists do, and how to understand & make productive use of this information.

Download-able \$US100.

With an additional 20 chapters on prospecting & small-scale mining. Activate the web page link now for more details & to download an example chapter.

BRANCH NEWS

ALBANY BRANCH

Meetings held 3rd Saturday of every second month. Each meeting consists of general Branch business and a guest speaker to assist members. Meetings are held at the Albany Men's Shed behind 77 Sanford Rd, Albany at 4pm.

Contact Michael McCaffery

AGM 19th JUNE

GOLDFIELDS BRANCH UPDATE

Meetings are held at the Regency Room at the Tower Hotel Crn Maritana and Bourke st Kalgoorlie meetings on the **last Thursday of every second month.**

Contact R Laing 0418 930 064

AGM 26th May

MANDURAH BRANCH

Meetings held at 1.30pm, 2 Leslie st Mandurah. See APLA website for date
Meeting Dates 2022: 9 Jan, 20March, 1 May (AGM, Camp notice), 11 September, 13 November
January 9th 2022 meeting members are asked to bring a small plate of food for afternoon tea.
Contact Bob Wilson 0429 001 515

AGM 1st MAY

SOUTHWEST BRANCH

Meetings Fourth Wednesday of every Second Month at the Capel Golf Club at 7:00pm - \$5 Includes Supper)

SW Branch AGM 4 May, 7pm at Capel Golf Club

Contact Judith, SW Secretary for more information, 0428385457



PERTH BRANCH UPDATE

APLA Perth Branch is conveniently located for Perth Members and now meets in the WA LAPIDARY AND ROCKHUNTING CLUB.31-35 GLADSTONE ROAD, RIVERVALE WA.

ANNUAL GENERAL MEETING Wednesday 1st June 2022 commencing 7.30pm

Contact Sue McKenna 0419 646 656

Another great night at the APLA Perth Branch meeting. Fantastic raffle again sponsored by Aaron from Reeds Prospecting. Excellent talk about Trilobite from Greg Eller. And thanks to Janet and Les for refreshments. Six new members and a visit from David Birch Delegate South West Branch.



APLA STATE AGM

TO BE HELD ON SATURDAY 17TH SEPTEMBER, AT MT MAGNET.

Contact APLA State Secretary .. sec@apla.com.au

Special GOLD Tracker APP Offer to APLA Members – 60% Off In App Scores Purchases valid until 31st May,

Brief Resume of Gold Tracker APP Product

GOLDtracker App has now been released,
Gold racker is now an Android app and to be developed as an iOS iPhone app.

How Can Goldtracker App Help You?

- Reduce the amount research time and effort before going prospecting in a new area.
- Goldtracker scores by Graticular Block will quickly provide you with an indication of the likelihood of finding gold in any area.
- For the newcomer it will enable you to be competitive with the seasoned prospector who knows all the tricks and understand the principles and relationships controlling gold transport and deposition.

The GOLDtracker Scores SIMPLIFY the knowledge you need to know about targeting potential gold Locations.

- Use GoldTracker to identify possible target areas, in areas you are not familiar with.
- Use GoldTracker to identify the BEST graticules on which to lodge a 40E permit.
- you can use GoldTracker to find other areas that have a similar or BETTER rating around areas that you have already found gold.
- Use Gold Tracker to assess your own areas or GPS points that you think might be worth a look.
- Chase the Geology - use Goldtracker to identify the gold producing 1:500,000 geology types in an area then trace that geology to other areas in the app
- Use Gold Tracker to identify the best areas to lodge a tenement application thus reducing the size and ongoing cost of tenements.
- Already have a tenement, use Gold Tracker to determine which areas are best to start your soil sampling or drilling program.

Some benefits with the New APP;

- GOLDtracker App is used on your Mobile Phone (First Android then Apple IOS). Carry it with you all the time.
- GOLDtracker App provides your location when you are in the field if you have GPS capability. Know exactly where you are at all times.

- GOLDtracker App automatically updates tenements daily if you are connected. No worries about "OUT OF DATE" tenements
- GOLDtracker App you can download Maps that can be used offline in the bush with GPS (if your mobile has GPS capability). You don't need Phone Connection if you are way out in the bush.
- GOLDtracker App has drilldown to Bedrock Geology and Fault-lines you can drill down and display 1:500,000 Bedrock Geology and Geological Faults in WA.
- Find the Geology that has the gold in the area - Then go to it and Find Gold!
- GOLDtracker APP scores are colour coded so you can instantly see where the best areas are, whether the land is vacant or pending and the local geology you should search for.

The Standard GOLDtracker app) provides;

The Basic app includes.

- Tenements updated each day.
- 1:500000 Bedrock Geology and Cenozoic Geology.
- Fault Lines in WA.
- Gold Mines.
- Other minerals information.
- Different views of maps like Topo, satellite, and street maps,
- Your GPS location (if you have GPS capability in your phone or device.)
- Ability to create offline maps and use them in your phone when you are not connected to phone service.
- Cost of the Standard GOLDtracker Ap is \$24.99 (a one Off, Once only Cost – no discount there sorry)
- Then you just buy one (or all of WA) of the 9 mining districts scores as in In App purchase. The In App Purchases are Discounted by 60% for APLA Members

APLA GoldTracker App Members Offer;

- The app itself is not discounted but it is a "Once Only Cost".
- APLA Members get a 60% discount on purchase of district scores 'In App'.

This is a "Thank you" from us at Goldtracker and Gold Prospecting WA for you supporting APLA by being a member.

We believe that the work APLA does will protect your rights and our children (and their children's) rights to do what is our rightful Historical Heritage and what set Australia up to be the country it is - Gold Prospecting.

This offer is only available to APLA members, and for a limited time

How Do You Get the GOLDtracker App?

Now available as an Android and later iOS iPhone App.

APLA Members Will enjoy a discount on purchase of the Mining District "App Zones" of 60% when they use the voucher especially created for APLA Members only.

The First Step - Understand How to Get the App from the Google Store to your Android Device

Go to this page and read about "[How to Get and Use the GOLDtracker App](#)" then scan the QR code to go to the Google Play Store at the Google play store where you can download the GOLDtracker App. Using your Google Play store email and login details.

Alternatively.... go to the Google Play Store and search for "Goldtracker Intepredata" which will bring up the App purchase page – from this you can purchase the GOLDtracker app.

The price of the GOLDtracker App is \$24.99 there is no discount on this price as it is a once only cost.

The Second Step – Download and Register the App

After you go to the Play store and download the app you need to register the app so it can be viewed on your Android Device, then it opens - click "Register";



Complete the Registration page and then.

- Log out,
- close the app • and reopen it again.

Registering for Goldtracker

When you first access Goldtracker you can login or Register. Click on Register and complete the information.

You can purchase the basic app which has :

- Maps,
 - Goldmines,
 - Tenements, Updated daily,
 - 1:500000k Geology,
 - Faults in WA,
 - Locational GPS (Where you are!).
- Then you can purchase "In APP" the Goldtracker scores for the Mining districts you require.

After you have bought GOLDtracker from the Google Play Store and opened it. Click on "Register" and this Register screen will enable you to register.

The email you register with is your Google email that you purchased the App with.

Note: After you have clicked "Register" and entered your details close the app and then open it again to "Sign In"

Some Important Points When You Register:

- Make sure you use the same email that you use for your Google Store login otherwise GOLDtracker App won't recognize you.
- Close the App after registration then re-open it again otherwise it will not work.
- If you have a SLOOOOW connection let it work, just wait a while for the registration to happen.
- Watch the changes of case in your email sometimes you Phone will start with and uppercase letter even if you think you have put in a lower-case letter.

The Third Step – Get You In App Districts.


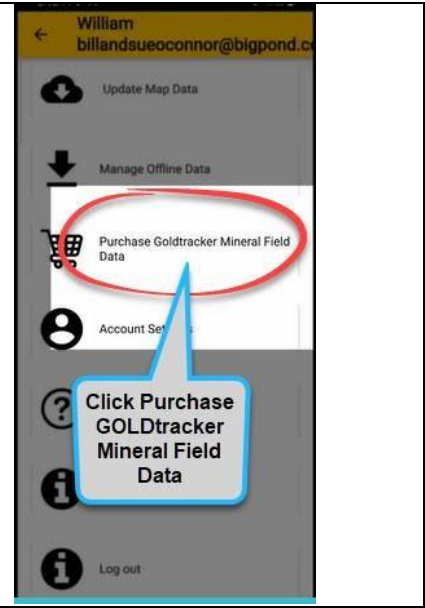
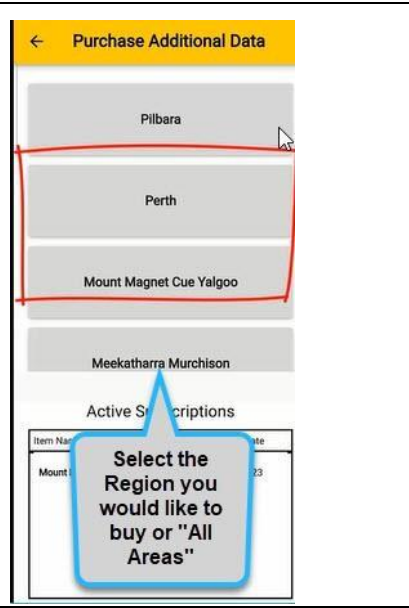
The third step you can use the GOLDtracker app to buy any “In App” GOLDtracker districts that you want - or All of WA if you want all the scores for Western Australia.



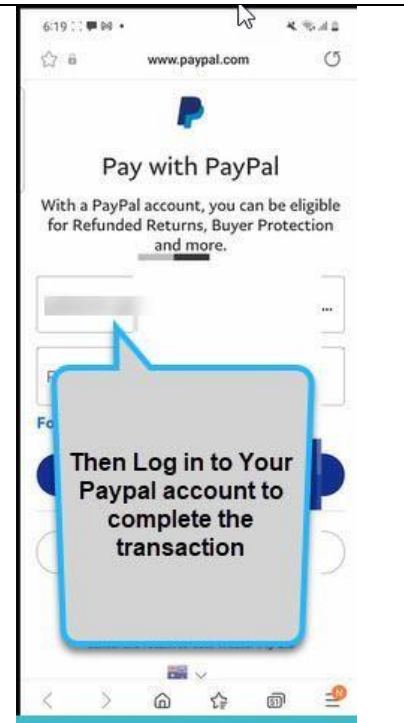
Enter the Discount Voucher provided by APLA to APLA members in the appropriate page and you will get 60% off your in App Purchases of districts.

Here are a few screen shots to show you the process but please look at the video on the bottom of this page which will show you the whole process. It will explain the process visually.

<https://goldtrackerapp.com.au/index>

IMPORTANT NOTE: Enter the Voucher Code in Paypal to Get the Discount – it will show at the payment page.

		
<p>1. In your App click the Hamburger menu.</p>	<p>2. Select Purchase Mineral Field Data in the Dropdown</p>	<p>3. Select the District or “All Areas”</p>

		
<p>4. Click Purchase that will take you to the Secure Paypal Screen.</p>	<p>5. Log in again</p>	<p>6. Login to your PayPal account to complete the transaction and enter the Special APLA Code</p>

The fees for GOLDtracker District App Zones are an annual cost. This is to ensure that funds are available to:

- update and maintain the app,
- Add layers based on your input and demand,
- Create an iPhone Version of the App.
- Add new functionality and
- to continue to add updated data to the Goldtracker scores as information becomes available.

Discount Voucher for APLA Members enter this code **60OFFAPLA**

Offer only available until 31st May

Contact us At GOLDtracker

Bill O'Connor a Member of the Perth Branch of APLA.

Kurk Brandstater a member of the Perth Branch of APLA.

Or phone

Bill O'Connor Mobile 0423190416

Ray Hammond Mobile 0419900218

Or email

william.oconnor@goldtrackerapp.com.au

Nugget weighing in excess of 1.63 Kg Discovered 2021.

Yes 1.63 Kg plus. The nugget contained rock and was crushed and panned which according to the finder took forever. Once melted down the total gold weight was 1.63Kg which was sold for well over \$100,000

It took 4 hours to dig this monster out and has convinced the prospector to seriously consider taking up prospecting as a fulltime occupation.

To all those that want to know where it was found, you would be surprised 1 well known area. 2 close to major gold town. And for those who want more.. it was not anywhere near Kalgoorlie, Nullagine, Marble Bar or anywhere in the Pilbara.



1.63kg of pure gold



AUSTRALIAN SHIELD SHRIMP



When it rains across Australia's vast inland region, temporary pools crop up all over the arid ground, giving life to a strange desert crustacean known as the shield shrimp (*Triops australiensis*).

Named after the formidable carapace that shields its head and upper body, *T. australiensis* can grow up to 7.6 cm long, and it uses its long, segmented tail and mass of 60 or so legs to propel itself through shallow water.

It also breathes through these legs – its sub-class *Branchiopoda* means 'gill-legged' – and in the females these legs bear ovisacs for carrying their tiny eggs.

Only one Australian species of shield shrimp

The only species of shield shrimp native to the Australian mainland, *T. australiensis* can be found wherever it's hot and dry, spawning in tiny rain-pools, drainage ditches, freshwater lakes and dams. They're most often found in pools and lakes that periodically dry up, which suggests that their eggs need to be completely desiccated for some time before the larvae can inside develop and hatch when they get wet again.

This means the dried-up eggs can be dispersed easily by the breeze to different locations, plus it doesn't matter if periods of rain are few and far between. Just as dried-up brine shrimp eggs are sold as 'sea monkeys', *T. australiensis* are sold in pet shops as a powder that can be brought to life with water.

When it hatches, *T. australiensis* begins life as a type of crustacean larva called a nauplius. It's at this stage when an odd third eye appears above the creature's usual pair, and it will retain this 'naupliar eye' into adulthood. Compared to the regular pair of eyes, the naupliar eye is quite simple, containing just a few light-sensitive cells to help the shield shrimp move towards or away from the light.



Wild dogs in Western Australia, a quick overview.

Many prospectors have encountered Dingoes in their travels. Following is a quick overview of Dingoes and their effect and control in WA.

The term wild dog is used to describe pure-bred **dingoes**, feral/escaped domestic dogs and their hybrids. Both dingoes and wild domestic dogs are the same species, *Canis familiaris*. Wild dogs are a major pest species impacting on grazing industries across mainland Australia.

- **Dingo wild dog**



Wild dog eradication.

If you are planning to go prospecting in the Murchison area of Western Australia, be aware that there is an ongoing wild dog eradication programme in progress.

Aerial and ground baiting plus trapping is being carried out on numerous pastoral lease holdings. The main areas are east of Yalgoo, Mount Magnet surrounds, Cue surrounds, Paynes Find surrounds and east towards Sandstone.

If you have a dog and want your dog to live a long and happy life DON'T bring your dog into these areas as there is no antidote for the dog poison.

Since arrival in Australia domestic dogs have interbred with **dingoes** and most wild dog populations now include some level of hybridisation. The extent of hybridisation across the country broadly reflects the intensity of human settlement. In Western Australia over half (59%) of wild dogs have tested as 'pure' **dingoes**. Within populations of wild dogs there is a low proportion of purely domestic dogs.

Wild dogs occur where there are suitable supplies of food and water. They are absent from most of the closely settled farming areas of the south-west, though may still be found in some forested areas.

In grazing areas wild dogs are subject to management programs because of their predation of livestock.

Problems caused by wild dogs

Wild dog predation on livestock is taking a heavy economic and emotional toll on livestock producers in affected pastoral and agricultural areas. In addition to significant annual stock losses to wild dogs, their threat is a major deterrent to restocking of livestock enterprises and to associated regional development opportunities, such as transport and shearing services. Stock losses from wild dogs in the rangelands of Western Australia alone are estimated at \$25 million per annum. Small stock are extremely vulnerable to the impacts of wild dogs. When wild dogs move into sheep paddocks they harass, bite and kill sheep, often without eating any. This behaviour appears to be a response to the presence of an abundant and panicky prey in flight. Predation of sheep can be recognised by the type of damage caused.

Cattle are considered to be able to withstand wild dog attacks to a greater extent. However, groups or packs of wild dogs may attack and kill young cattle. Considerable variation in losses of calves have been recorded ranging from negligible to significant in some areas.

Legal status

Wild dogs, that is dingoes, feral dogs and their hybrids are declared pests for the whole of Western Australia under section 22 of the *Biosecurity and Agriculture Management Act 2007*.

The **Western Australian Organism List** (WAOL) describes the control and keeping categories and the areas in which this pest is declared for each of the following groups: dingoes, dingo hybrids and feral dogs (*Canis familiaris*).

Dingoes are considered native wildlife under the *Biodiversity Conservation Act 2016* (BC Act). An exemption order made under section 271 of the BC Act exempts people from the requirement for a licence for activities involving dingoes. While the exemption order includes an exemption for the use of prohibited methods and devices listed under the BC Act in relation to taking or disturbing of dingoes, this does not mean that any method or device can be used without authorisation and the provisions of the *Animal Welfare Act 2002* still apply in relation to cruelty. See the section below on control methods that may be used.

Western Australia's policy for wild dog management is to control all wild dogs, including dingoes, in and near livestock grazing areas in Western Australia. In other areas **dingoes** are left undisturbed.

Wild dog management strategies

The management of wild dogs in WA is guided by the [Western Australian Wild Dog Action Plan 2016-2021 \(WDAP\)](#), which aims to facilitate a more coordinated and well-resourced approach to wild dog control in Western Australia. The action plan can be downloaded from this page.

The WDAP is part of the WA State Government's long term commitment to wild dog control. This includes management of the [State Barrier Fence](#) by the Department of Primary Industries and Regional Development (DPIRD). Through a previous \$10.6 million investment of Royalties for Regions funding, new fencing was installed to fill a 170km gap, and all of the fence was upgraded to wild dog standard. The WDAP includes further funding for the proposed 640km Esperance extension, if approved.

DPIRD also supports industry and landholders in wild dog control through biosecurity groups. Recognised Biosecurity Groups (RBGs) have the option to collect Declared Pest Rates to fund declared pest control, including wild dogs. These rates are matched by the State Government. DPIRD administers the Declared Pest Account in which these funds are received, held and allocated.

DPIRD has a further key role in ensuring the safe use of restricted chemical products (such as [1080 and strychnine](#)) for their ongoing use by industry for the control of pests, including wild dogs.

Control methods

Under the *Biosecurity and Agriculture Management Act 2007* landholders - landowners and occupiers - are responsible for wild dog control on their own land. However, for vertebrate animal pest control, everyone must ensure they use the most humane method available

There are a number of control options available, including ground and aerial [baiting with meat poisoned with 1080 \(sodium fluoroacetate\)](#), [canid pest ejectors](#), [trapping using strychnine](#), [fencing](#) and to a lesser extent, trapping and shooting.

Alternative views .. complex case of dingoes in the desert:

Twenty two years of surveys have examined the dingo's complex but positive role in the ecosystem of arid Australia, noting that they play a role in suppressing feral pest populations.

"We feel that dingoes do provide a role in controlling cats and foxes because dingoes are a predator themselves, and foxes and cats are smaller predators, and they compete for similar types of food," said study author Dr Aaron Greenville.

Source: [Cats, foxes pose bigger risk to native wildlife than climate change in the outback](#)

Scientific community divided

The dingo's taxonomic status has long been a contentious topic for academics since it was first encountered by Europeans in the late 1700s.

The Australian Museum recently concluded the dingo was not a separate species but a "feral population of an ancient breed of domestic dog that was brought to Australia by humans" about 4,000 years ago.

The Museum argues that this should not take away their scientific, ecological and cultural significance.

Associate Professor Euan Ritchie from Deakin University, who has studied the role of dingoes in the Australian environment, said the animals perform a vital role in controlling the numbers of feral animals like cats and foxes.

"We really need to be thinking about how we can maintain the dingo in the landscape while reducing potential negative impacts on things like livestock," he said.

"If dingoes aren't given the protection they deserve, it will upset the country's ecological balance potentially leading to environmental issues like erosion and species extinction."

Professor Ballard said one of the key differences between dingoes and dogs is the number of copies of the pancreatic "amylase" gene each has.

"A pure dingo has only one copy of the amylase gene, whereas domestic dogs have multiple copies – which we show influences the gut microbiome and, we predict, affects what dingoes eat," Professor Ballard said.

"Based on this new knowledge, we hypothesise that dingoes are far less likely to eat farm animals, including sheep.

"If we're correct, what farmers currently assume are dingoes killing their stock are likely to be feral wild dogs."

"We've lost the thylacine and other top predators in the past, so we don't really have a large predator controlling things like kangaroo numbers and other smaller predators. "The dingo is all we have."

THE GOOD AND NOT SO GOOD CUSTOMER REVIEWS ON THE MINELAB GPX6000

Since it's release in early April 2021 there has been a lot of hype over this detector. Most comes from dealers or 1 or 2 short videos on YouTube. These You Tube videos usually explain how the detector works and settings but leaves the final decision up to the viewer as to whether the GPX6000 is worth the money.

I thought I would go on Facebook and get some actual owners of this detector to forward their comments . The following is a sample result.

Positive

"For me it's the best thing since sliced bread. I often got lost in the myriad of controls on the 5000. Thanks to info from Aaron of Reeds Prospecting, I now take the time to balance the machine before I start. That's made it even quieter. "

"I have found that good ground contact with the coil (that's what skid plates are for) increases the depth of a signal and it matters very little if the coil is travelling 'low & slow". I pick mine up at a fairly fast rate and have had success every time with the 6000."

"I love mine because it is so light and I have back and knee issues. I found a lot of gold with my 2300 with large coilteck elliptical coil and it was a lot easier to pinpoint with. I use the 14' coil on my 6000 the most to cover more ground and help elevate the mineralised ground I detect on. I honestly don't think I have found more gold than I would have with the 2300 Set up I had"

"Mine lab have made an excellent machine with the GPX6000 it can be used by any one with a bit of common sense it is the most sensitive machine they have ever made if you read the manual carefully you can get the machine to run quietly then the chatter threshold won't annoy you. It takes a bit of time to fully understand the machine. Look and study how to ground balance and the effect that auto and auto + has on the machine."

"I love mine. The only thing it needs is an adjustable pitch"

" have run the GPX 6000 in very hot magnetite laden serpentine based northern Sierra ground, the hottest I can find, and the detector runs like a detector in really hot ground. Exactly like my GPZ used to run, not perfect, but handles it."

Not so positive

"Detector lacks depth"

"The GPX 11 Mono coil is the top choice for covering large areas of ground quickly and efficiently. It is the top performer when searching for large deep nuggets in **less mineralised ground. Like all monoloop coils, the GPX 11 Mono is susceptible to noise in conductive ground or when there are high levels of EMI "**

"I thought this new u beaut super expensive machine was going to rid these problems, but seemingly no ! Less mineralised ? That wipes out most of Western Australia ! I saw no mention of threshold tone control either"

"The 11inch mono is very sensitive and noisy in WA soil (especially salty soil that can be a lot of WA) The 11inch coil particularly becomes unstable in CZL. Although the 14inch DD coil eliminates all these problems, it is too heavy for me.. .Oh and do not use your mobile phone anywhere near it. If your working with someone else in the field beside you the mono 11 inch screams with interference so that only leaves the double D. Which works perfectly".

The consensus is that the 6000 on a mono coil is noisy. If you are not happy change to the DD coil. Downside is the DD is heavier. EMI also appears to be a problem with the mono coil.

Coiltek have announced that they are bringing out a lighter DD coil in the near future for the 6000.

Overall, it is proving to be a very good machine situated between the GPX5000 and the GPZ7000. It has less controls and knobs which will suit most people, relatively light weight, and priced as you would expect from such a machine.

WET WEATHER FORECAST???

The recent wet weather in the goldfields has prompted a number of prospectors to stay in the local caravan park instead of out in the bush.

It does not necessarily mean you miss the downpour.



Continuing on about wet weather in the goldfields.

It is an offence to drive on closed roads (be they signposted or warnings given out by Main Roads.) The offence is \$1000 per tyre.

It is also hazardous, life threatening and damaging to drive on Pastoral Lease roads that have had recent rain. Massive damage can be caused to Pastoral Lease tracks and extraction for the bog will cost you money.

Even in dry weather, every time you drive off existing tracks you make a new water course which will cause erosion.

STAY ON EXISTING TRACKS!!!





**A HUGE THANK
YOU TO OUR
SPONSORS**





A big thank you to our sponsors

**MINELAB—COILTEK—ALTRONICS--NUGGET FINDER
REEDS PROSPECTING—THE PROSPECTORS PICK—
FINDERS KEEPERS—BLUEPRINT INDUSTRIES—
THE PROSPECTORS PATCH-- GOLD PROSPECTING WA.**

Personalized names on
APLA shirts

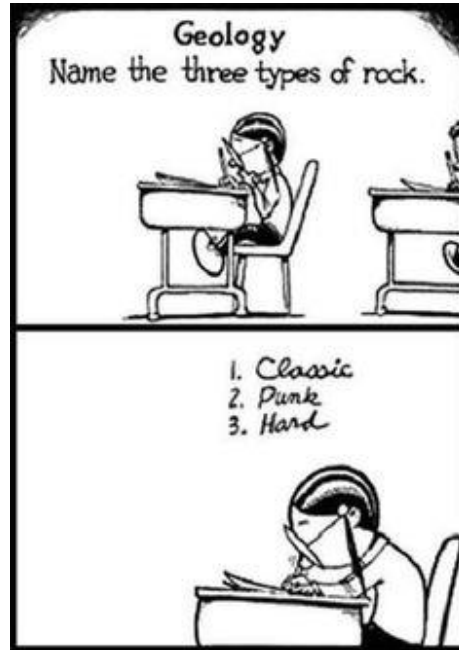
Not only shirts but towels
and other Manchester.

Towels with name and design
range from \$25 to \$35.

Most designs are done on set
sizes 100cm x 100 cm and 180cm
x 130cm.

Loads of different designs

Call Linda on 0409971438



Datum Post Advertising Costs 06/11/2019 to a targeted
prospecting audience of 2000+ members
All artwork must be provided to the Editor.

	Member	Non Member
Full Page Add	\$200	\$400
½ Page Add	\$120	\$220
¼ Page Add	\$80	\$140
Business Card	\$60	\$120

Please send all artwork to the editor
aplanews@apla.com.au

Cost is per issue. There are 6 eNews published annually.

DISCLAIMER: The Datum Post takes no responsibility for articles or advertising material published in its Newsletter. Opinions expressed are those of the original authors and do not necessarily reflect those of the Editor or the association. Persons acting on any article or advertising published in The Datum Post do so at Their own discretion.

NEXT ISSUE OF THE DATUM POST is July 2022

Cut-off date for advertising 15th July, articles, members photos EDITOR contact:

aplanews@apla.com.au

Steve Palmer 0498 353 232